



Life comes with challenges.

Your Assistance Program is here to help.

Your Assistance Program can help you reduce stress, improve mental health, and make life easier by connecting you to the right information, resources, and referrals.

All services are free, confidential, and available to you and your family members. This includes access to short-term counseling and the wide range of services listed below:

5 Mental Health Sessions per issue per year

Manage stress, anxiety, and depression, resolve conflict, improve relationships, and address any personal issues. Choose from in-person sessions, video counseling, or telephonic counseling.

5 Life Coaching per year

Reach personal and professional goals, manage life transitions, overcome obstacles, strengthen relationships, and achieve greater balance.

Financial Consultation

Build financial wellness related to budgeting, buying a home, paying off debt, resolving general tax questions, preventing identity theft, and saving for retirement or tuition.

Legal Referrals

Receive referrals for personal legal matters including estate planning, wills, real estate, bankruptcy, divorce, custody, and more.

Work-Life Resources and Referrals

Obtain information and referrals when seeking childcare, adoption, special needs support, eldercare, housing, transportation, education, and pet care.

Personal Assistant

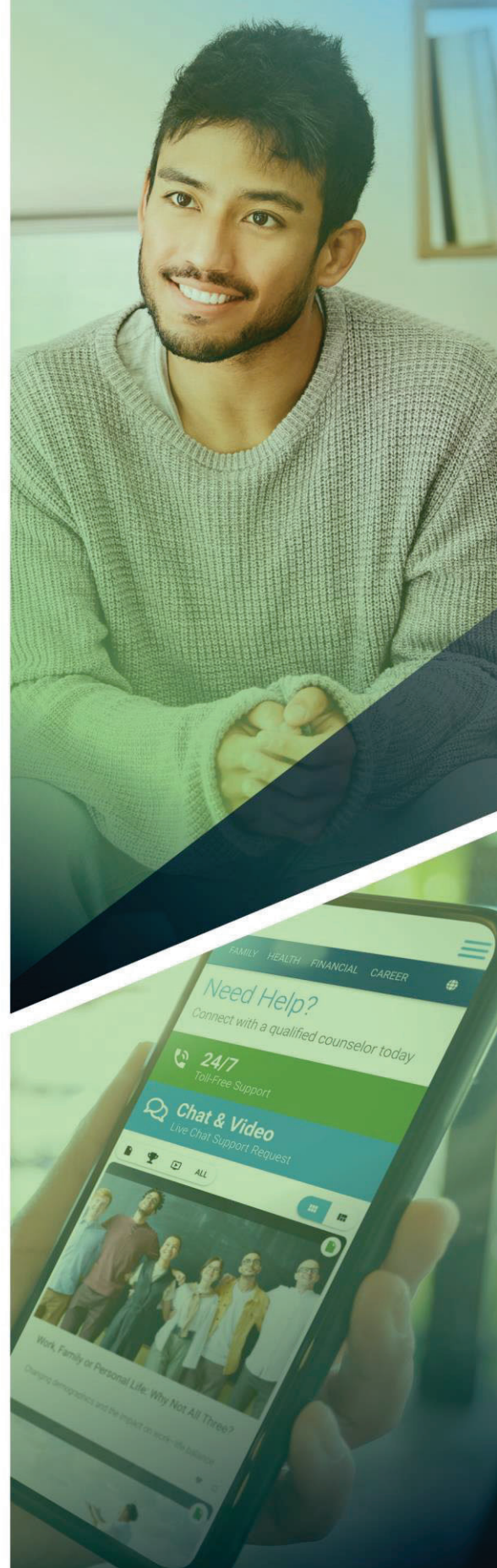
Save time with referrals for travel and entertainment, seeking professional services, cleaning services, home food delivery, and managing everyday tasks.

Medical Advocacy

Get help navigating insurance, obtaining doctor referrals, securing medical equipment, and planning for transitional care and discharge.

Member Portal

Access your benefits 24/7/365 through your member portal with online requests and chat options. Explore thousands of self-help tools and resources including articles, assessments, podcasts, and resource locators.



Call: 800-227-6007

Visit: www.myimpactsolution.com

Code: postdocs

IMPACTSOLUTIONS™

An AllOne Health Company